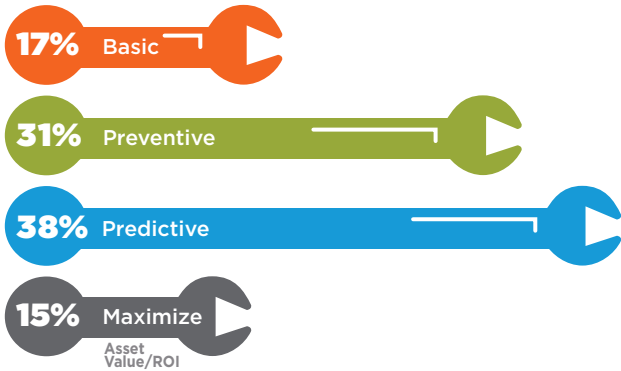


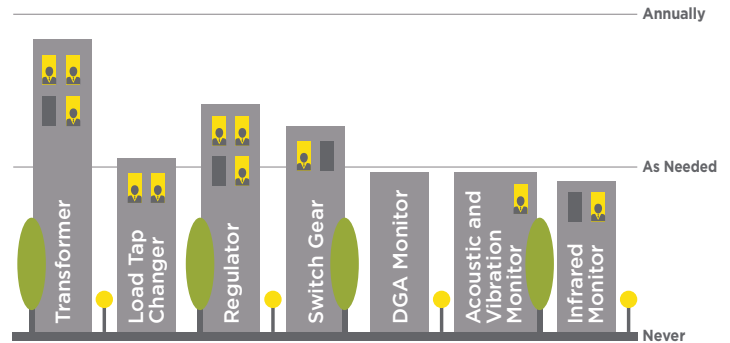
Municipal Electric Utility Asset Management Survey

Ranging from small farming towns to coastal cities, municipal electric departments across 12 states participated in our 2016 asset management survey. Here are the highlights:

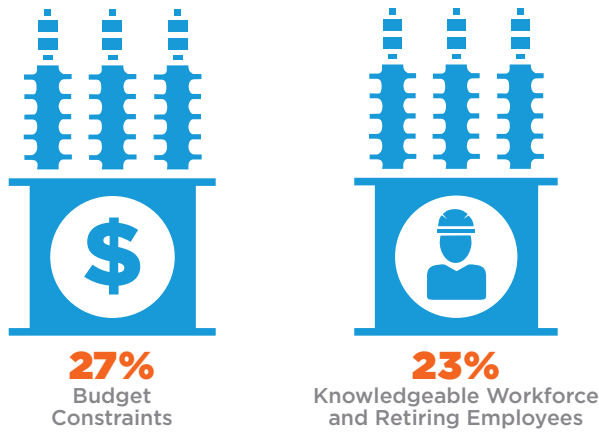
Which phrase best describes your municipality's approach to electrical asset maintenance?



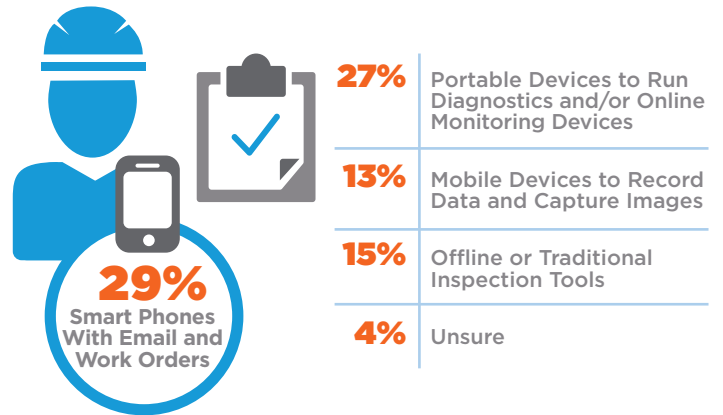
How often do you inspect or test the following assets in your municipality?



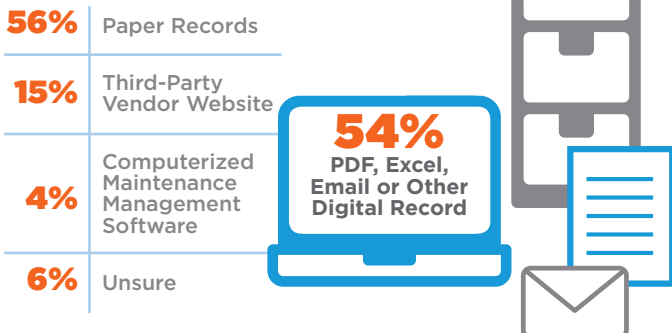
What major challenges do you face in the coming years?



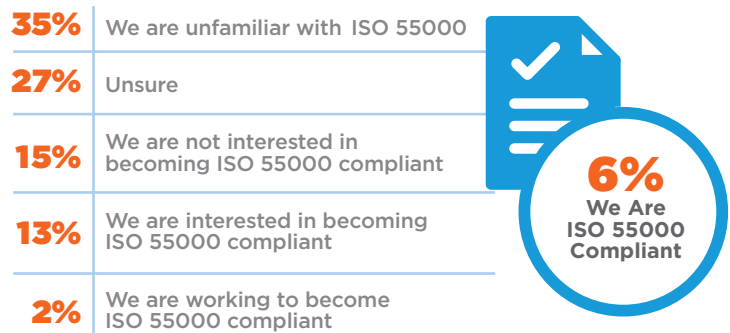
To what extent is mobile or modern technology utilized for inspecting substations or sites?



How do you store and track your maintenance records?



To what extent is your municipality's electric division interested in ISO 55000?*



*Launched 2014, ISO 55000 centers on physical asset management.